



Reviewed for Code Compliance
Approved with Conditions
Date: 05/16/14

W4

BEARING, 1-HOUR RATED EXTERIOR WALL
STC SOUND - N/A
UL DES. U364

- WOOD FRAMING - WOOD STUDS, NOM. 2 IN BY 6 IN., DOUBLE TOP PLATE AND SINGLE BASE PLATE, SEE STRUCTURAL FOR; STUD LAYOUT BRACING, AND FASTENERS.
- BATT INSULATION - R21 FIBER GLASS BATT INSULATION PACKED TIGHT INTO WALL CAVITY.
- PREFABRICATED INSULATED SHEAR PANEL - BASIS OF DESIGN: HUNTER PANELS XGI PLY - 2" POLYISOCYANURATE ADHERED TO 5/8" THICK NON-FIRE-RATED CDX FIR PLYWOOD SHEATHING. MECHANICALLY FASTEN PANEL TO STUDS 6" O.C. ALONG THE PERIMETER AND 12" O.C. TO STUDS WITHIN THE FIELD OF THE PANEL, WITH 4" #8 SCREWS HI-LOW TREADED W/ CLIMACOAT.
- AIR/MOISTURE BARRIER - BUILDING WRAP - REFER TO SPECIFICATION.
- FIBER CEMENT PANEL SYSTEM - (FCPS) BY NICHHA w/ PROPRIETARY ATTACHEMENTS, SEE ELEVATIONS FOR PANEL LAYOUT.
- 5/8" TYPE X GLASS MAT GYPSUM SHEATHING - APPLY PARALLEL TO STUDS WITH 1" TYPE S-12; SELF DRILLING, CORROSION RESISTANT, BUGLE HEAD, DRYWALL SCREWS 12" O.C.
- GYPSUM BOARD - (1) LAYER 5/8" GYP. BD., PAPER SURFACED, APPLIED PERPENDICULAR TO FRAMING WITH 1" TYPE S STEEL SCREWS SPACED 8" O.C. SEE NOTES FOR GYP. BD. TYPE.
- BED OF SEALANT - BETWEEN ALL DOUBLE TOP PLATES, ALL TOP AND BOTTOM PLATES IN CONTACT WITH FLOOR / DECK FRAMING / CONC. SLAB.

SEE EXT. DETAILS FOR THRU FLASHING, ACCESSORIES, AND DETAILS

4A | -WALL TYPE 4A - TYP EXTERIOR WALL FL 2-4

1 1/2" = 1'-0"

W1

NON BEARING, NON RATED EXTERIOR WALL
STC SOUND - N/A
UL DES. U364

- CONT. METAL FLOOR AND CEILING RUNNER - CHANNEL SHAPED 25 MSG STEEL WITH 1 1/4" LONG LEGS FASTENERS @ 2'-0" O.C. MAX. WITHIN 1" OF ENDS.
- STEEL STUDS - CHANNEL SHAPED 25 MSG 20 GA STEEL 6" STUDS SPACED MAX. 24" O.C. STUDS TO BE CUT 3/4" LESS THAN ASSEMBLY HEIGHT.
- BATT INSULATION - R21 FIBER GLASS BATT INSULATION PACKED TIGHT INTO WALL CAVITY.
- PREFABRICATED INSULATED SHEAR PANEL - BASIS OF DESIGN: HUNTER PANELS XGI PLY - 2" POLYISOCYANURATE ADHERED TO 5/8" THICK NON-FIRE-RATED CDX FIR PLYWOOD SHEATHING. MECHANICALLY FASTEN PANEL TO STUDS WITH 4" TRUEFAST SIP TP SCREWS HI-LOW TREADED W/ CLIMACOAT 6" O.C. ALONG THE PERIMETER OF THE PANEL AND 12" O.C. WITHIN THE FIELD OF THE PANEL.
- AIR/MOISTURE BARRIER - BUILDING WRAP - REFER TO SPECIFICATION.
- FIBER CEMENT PANEL SYSTEM - (FCPS) BY NICHHA w/ PROPRIETARY ATTACHEMENTS, SEE ELEVATIONS FOR PANEL LAYOUT.
- PVC BOARD - PAINTED TO MATCH FIBER CEMENT PANELS ABOVE (REFER TO ELEVATIONS) - COUNTERSUNK SCREWS AND PLUGS.
- 5/8" TYPE X GLASS MAT GYPSUM SHEATHING - APPLY PARALLEL TO STUDS WITH 1" TYPE S-12; SELF DRILLING, CORROSION RESISTANT, BUGLE HEAD, DRYWALL SCREWS 12" O.C.
- GYPSUM BOARD - (1) LAYER 5/8" GYP. BD., PAPER SURFACED, APPLIED PERPENDICULAR TO FRAMING WITH 1" TYPE S STEEL SCREWS SPACED 8" O.C. SEE NOTES FOR GYP. BD. TYPE.
- BED OF SEALANT - MTL TRACKS IN CONTACT WITH CONCRETE TO BE SET IN A FULL BED OF SEALANT. SEAL OTHER TRACKS TO DECK.

SEE EXT. DETAILS FOR THRU FLASHING, ACCESSORIES, AND DETAILS

HIGHEST GRADE OF ENTIRE LENGTH OF WALL (SEE ELEV.)

1A | -WALL TYPE 1A - TYP EXTERIOR WALL FIRST FL

1 1/2" = 1'-0"

W6

BEARING, 1-HOUR RATED EXTERIOR WALL
STC SOUND - N/A
UL DES. U330

- WOOD FRAMING - WOOD STUDS, NOM. 2 IN BY 6 IN., DOUBLE TOP PLATE AND SINGLE BASE PLATE, SEE STRUCTURAL FOR; STUD LAYOUT BRACING, AND FASTENERS.
- CLOSED CELL SPRAY INSULATION - 3" CLOSED CELL SPRAY INSULATION.
- SHEATHING - 1/2" OSB SHEATHING.
- AIR/MOISTURE BARRIER - BUILDING WRAP - REFER TO SPECIFICATION.
- PLASTIC FURRING STRIPS - CORAVENT SVS FURRING SYSTEM. LOCATE STURD STRIP VERTICAL STRAPPING CENTERED ON STUDS. ATTACH WITH 1 3/4" LONG CORROSION RESISTANT ROOFING NAILS AS DIRECTED BY MANUFACTURER.
- FIBER CEMENT PANEL - BASIS OF DESIGN: HUNTER PANELS XGI PLY - 2" POLYISOCYANURATE ADHERED TO 5/8" THICK NON-FIRE-RATED CDX FIR PLYWOOD SHEATHING. MECHANICALLY FASTEN PANEL TO STUDS 6" O.C. ALONG THE PERIMETER AND 12" O.C. TO STUDS WITHIN THE FIELD OF THE PANEL, WITH 4" #8 SCREWS HI-LOW TREADED W/ CLIMACOAT.
- AIR/MOISTURE BARRIER - BUILDING WRAP - REFER TO SPECIFICATION.
- FIBER CEMENT PANEL SYSTEM - (FCPS) BY NICHHA w/ PROPRIETARY ATTACHEMENTS, SEE ELEVATIONS FOR PANEL LAYOUT.
- GYPSUM BOARD - (1) LAYER 5/8" GYP. BD., PAPER SURFACED, APPLIED PERPENDICULAR TO FRAMING WITH 1" TYPE S STEEL SCREWS SPACED 8" O.C. SEE NOTES FOR GYP. BD. TYPE.
- BED OF SEALANT - MTL TRACKS IN CONTACT WITH CONCRETE TO BE SET IN A FULL BED OF SEALANT. SEAL OTHER TRACKS TO DECK.

SEE EXT. DETAILS FOR THRU FLASHING, ACCESSORIES, DETAILS, AND ADJACENT ASSEMBLIES

6 | -WALL TYPE 6 - TYPICAL DOG HOUSE

1 1/2" = 1'-0"

W5

NON BEARING, NON RATED EXTERIOR WALL
STC SOUND - N/A

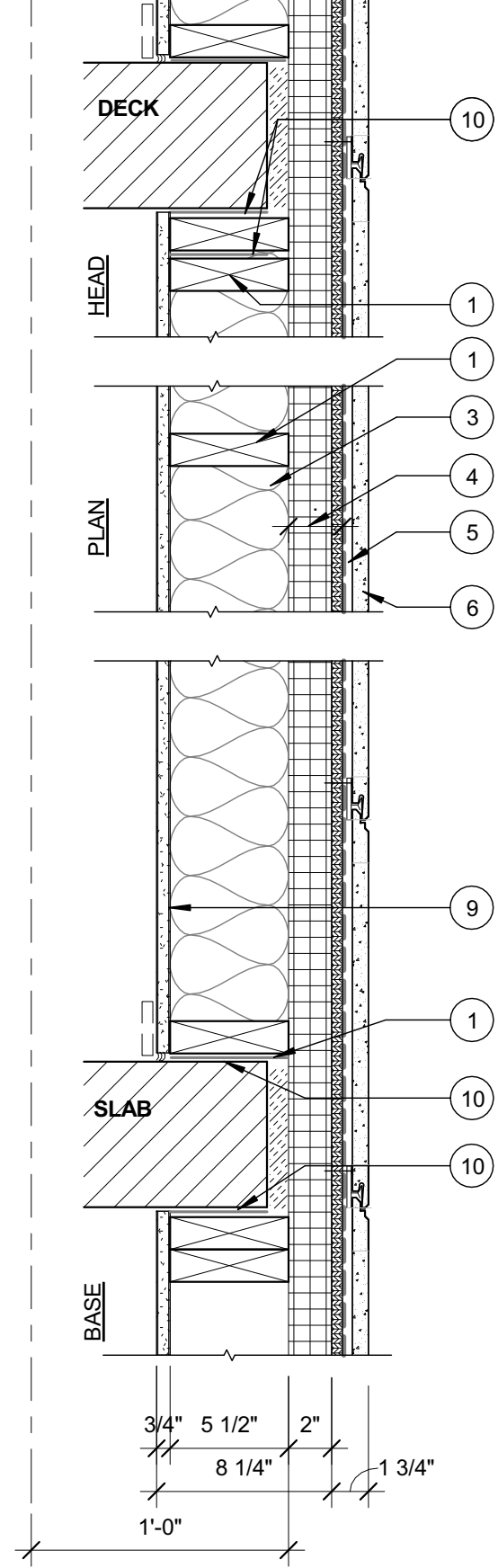
- CONCRETE BLOCKS - CLASSIFICATION D-2 (2HR) 8" NOM. THICKNESS.
- MORTAR - BLOCKS LAID IN A FULL BED OF MORTAR, NOM. 3/8 IN THICK, OF NOT LESS THAN 2 1/4 AND NOT MORE THAN 3 1/2 PARTS CLEAN SHARP SAND TO 1 PART PORTLAND CEMENT (PROPORTIONED BY VOLUME) AND NOT MORE THAN 50 PERCENT HYDRATED LIME (BY CEMENT VOLUME). VERTICAL JOINTS STAGGERED.
- REINFORCING - SEE STRUCTURAL DRAWINGS.
- PREFABRICATED INSULATED SHEAR PANEL - BASIS OF DESIGN: HUNTER PANELS XGI PLY - 2" POLYISOCYANURATE ADHERED TO 5/8" THICK NON-FIRE-RATED CDX FIR PLYWOOD SHEATHING. MECHANICALLY FASTEN PANEL TO STUDS 6" O.C. ALONG THE PERIMETER AND 12" O.C. TO STUDS WITHIN THE FIELD OF THE PANEL, WITH 4" #8 SCREWS HI-LOW TREADED W/ CLIMACOAT.
- AIR/MOISTURE BARRIER - BUILDING WRAP - REFER TO SPECIFICATION.
- FIBER CEMENT PANEL SYSTEM - (FCPS) BY NICHHA w/ PROPRIETARY ATTACHEMENTS, SEE ELEVATIONS FOR PANEL LAYOUT.
- PVC BOARD - PAINTED TO MATCH FIBER CEMENT PANELS ABOVE (SEE ELEVATIONS) - COUNTERSUNK SCREWS & PLUGS.
- GYPSUM BOARD - (1) LAYER 5/8" GYP. BD., PAPER SURFACED, APPLIED PERPENDICULAR TO FRAMING WITH 1" TYPE S STEEL SCREWS SPACED 8" O.C. SEE NOTES FOR GYP. BD. TYPE.
- BED OF SEALANT - MTL TRACKS IN CONTACT WITH CONCRETE TO BE SET IN A FULL BED OF SEALANT. SEAL OTHER TRACKS TO DECK.

SEE EXT. DETAILS FOR THRU FLASHING, ACCESSORIES, AND DETAILS

5 | -WALL TYPE 5 - EXTERIOR WALL AT STAIR B

1 1/2" = 1'-0"

XX



W4

BEARING, 1-HOUR RATED EXTERIOR WALL
STC SOUND - N/A
UL DES. U330

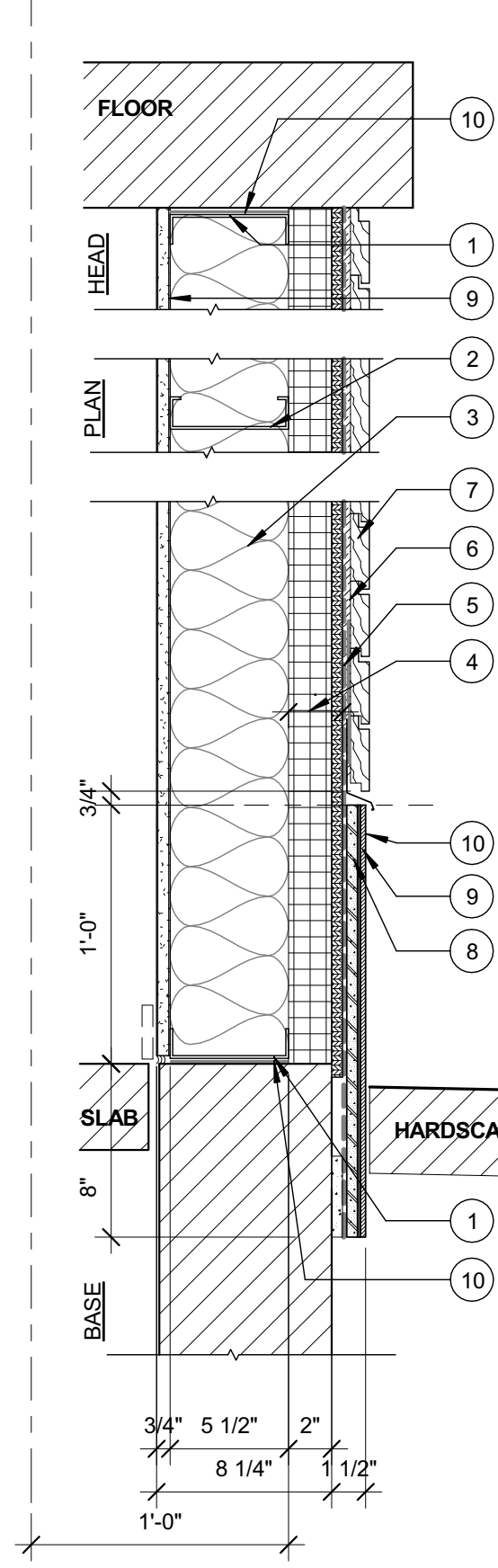
- WOOD FRAMING - WOOD STUDS, NOM. 2 IN BY 6 IN., DOUBLE TOP PLATE AND SINGLE BASE PLATE, SEE STRUCTURAL FOR; STUD LAYOUT BRACING, AND FASTENERS.
- BATT INSULATION - R21 FIBER GLASS BATT INSULATION PACKED TIGHT INTO WALL CAVITY.
- PREFABRICATED INSULATED SHEAR PANEL - BASIS OF DESIGN: HUNTER PANELS XGI PLY - 2" POLYISOCYANURATE ADHERED TO 5/8" THICK NON-FIRE-RATED CDX FIR PLYWOOD SHEATHING. MECHANICALLY FASTEN PANEL TO STUDS 6" O.C. ALONG THE PERIMETER AND 12" O.C. TO STUDS WITHIN THE FIELD OF THE PANEL, WITH 4" #8 SCREWS HI-LOW TREADED W/ CLIMACOAT.
- AIR/MOISTURE BARRIER - BUILDING WRAP - REFER TO SPECIFICATION.
- FIBER CEMENT PANEL SYSTEM - (FCPS) BY NICHHA w/ PROPRIETARY ATTACHEMENTS, SEE ELEVATIONS FOR PANEL LAYOUT.
- GYPSUM BOARD - (1) LAYER 5/8" GYP. BD., PAPER SURFACED, APPLIED PERPENDICULAR TO FRAMING WITH 1" TYPE S STEEL SCREWS SPACED 8" O.C. SEE NOTES FOR GYP. BD. TYPE.
- BED OF SEALANT - BETWEEN ALL DOUBLE TOP PLATES, ALL TOP AND BOTTOM PLATES IN CONTACT WITH FLOOR / DECK FRAMING / CONC. SLAB.

SEE EXT. DETAILS FOR THRU FLASHING, ACCESSORIES, AND DETAILS

4 | -WALL TYPE 4 - TYP EXTERIOR WALL FL 2-4

1 1/2" = 1'-0"

XX



W3

NON BEARING, NON RATED EXTERIOR WALL
STC SOUND - N/A

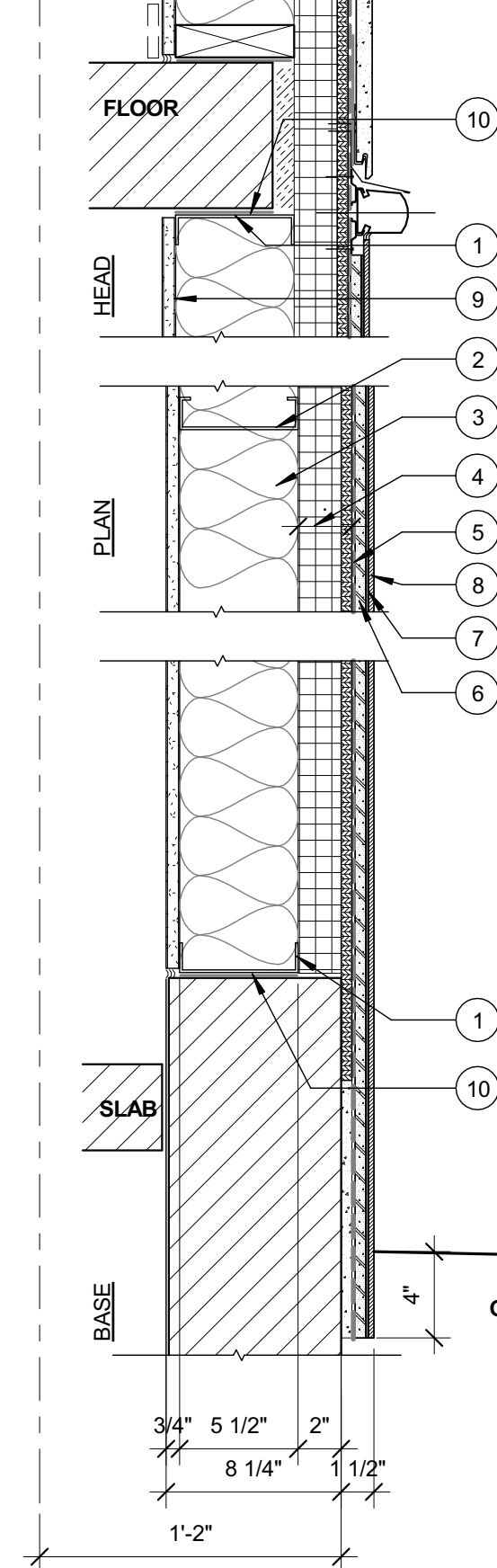
- CONT. METAL FLOOR AND CEILING RUNNER - CHANNEL SHAPED 25 MSG STEEL WITH 1 1/4" LONG LEGS FASTENERS @ 2'-0" O.C. MAX. WITHIN 1" OF ENDS.
- STEEL STUDS - CHANNEL SHAPED 25 MSG 20 GA STEEL 6" STUDS SPACED MAX. 24" O.C. STUDS TO BE CUT 3/4" LESS THAN ASSEMBLY HEIGHT.
- BATT INSULATION - R21 FIBER GLASS BATT INSULATION PACKED TIGHT INTO WALL CAVITY.
- PREFABRICATED INSULATED SHEAR PANEL - BASIS OF DESIGN: HUNTER PANELS XGI PLY - 2" POLYISOCYANURATE ADHERED TO 5/8" THICK NON-FIRE-RATED CDX FIR PLYWOOD SHEATHING. MECHANICALLY FASTEN PANEL TO STUDS WITH 4" TRUEFAST SIP TP SCREWS HI-LOW TREADED W/ CLIMACOAT 6" O.C. ALONG THE PERIMETER OF THE PANEL AND 12" O.C. WITHIN THE FIELD OF THE PANEL.
- AIR/MOISTURE BARRIER - BUILDING WRAP - REFER TO SPECIFICATION.
- RAIN MATRIX - BASIS OF DESIGN: BENJAMIN OBDYKE HOME SLICKER.
- SHIPLAP SIDING - 5 1/2" WHITE OAK SHIPLAP SIDING BLIND NAILED.
- CEMENT BOARD - BASIS OF DESIGN: DUROCK 5/8 IN. THICK, 4 FT WIDE ATTACHED TO METAL STUDS WITH TYPE S STEEL SCREWS SPACED 8 IN. O.C. ALONG EDGES OF BOARD AND 12 IN. O.C. IN THE FIELD OF THE BOARD.
- BOND COAT FOR SETTING TILE - LATEX MODIFIED PORTLAND CEMENT MORTAR APPLIED WITH A NOTCHED TROWEL.
- 12" X 24" DAL TILE MAGMA COLORBODY PORCELAIN TILE - ELEMENT MGS1 GROOVED (LIGHT POLISHED).
- GYPSUM BOARD - (1) LAYER 5/8" GYP. BD., PAPER SURFACED, APPLIED PERPENDICULAR TO FRAMING WITH 1" TYPE S STEEL SCREWS SPACED 8" O.C. SEE NOTES FOR GYP. BD. TYPE.
- BED OF SEALANT - MTL TRACKS IN CONTACT WITH CONCRETE TO BE SET IN A FULL BED OF SEALANT. SEAL OTHER TRACKS TO DECK.

SEE EXT. DETAILS FOR THRU FLASHING, ACCESSORIES, AND DETAILS

3 | -WALL TYPE 3 - EXTERIOR WALL - SHIPLAP WOOD

1 1/2" = 1'-0"

XX



W2

NON BEARING, NON RATED EXTERIOR WALL
STC SOUND - N/A

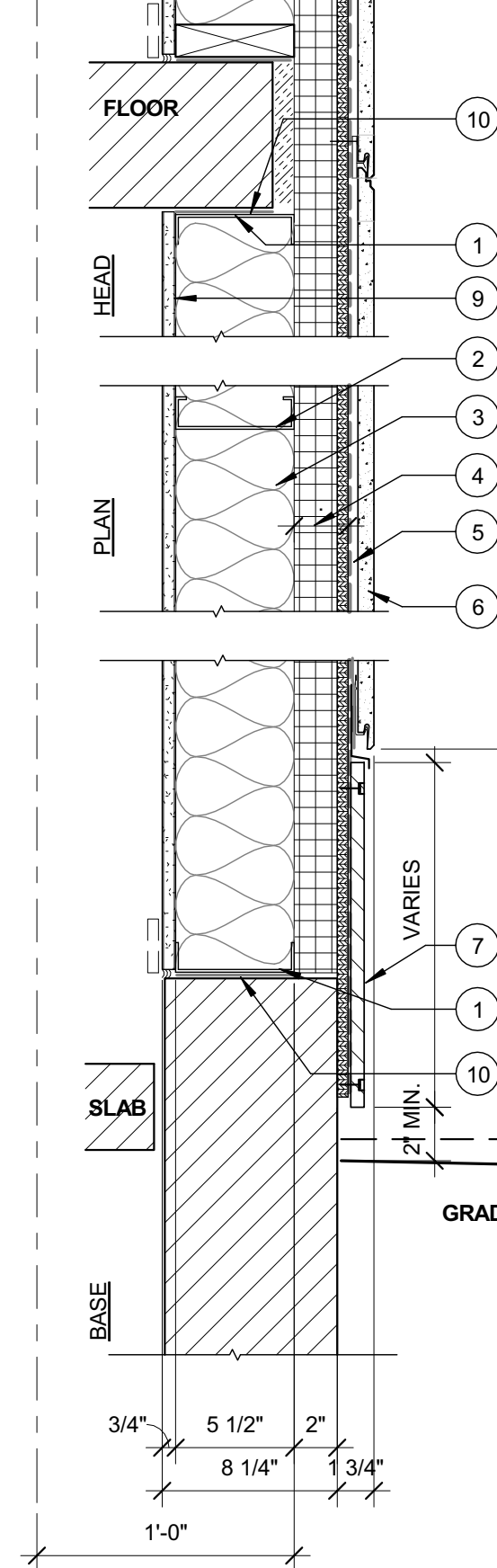
- CONT. METAL FLOOR AND CEILING RUNNER - CHANNEL SHAPED 25 MSG STEEL WITH 1 1/4" LONG LEGS FASTENERS @ 2'-0" O.C. MAX. WITHIN 1" OF ENDS.
- STEEL STUDS - CHANNEL SHAPED 25 MSG 20 GA STEEL 6" STUDS SPACED MAX. 24" O.C. STUDS TO BE CUT 3/4" LESS THAN ASSEMBLY HEIGHT.
- BATT INSULATION - R21 FIBER GLASS BATT INSULATION PACKED TIGHT INTO WALL CAVITY.
- PREFABRICATED INSULATED SHEAR PANEL - BASIS OF DESIGN: HUNTER PANELS XGI PLY - 2" POLYISOCYANURATE ADHERED TO 5/8" THICK NON-FIRE-RATED CDX FIR PLYWOOD SHEATHING. MECHANICALLY FASTEN PANEL TO STUDS WITH 4" TRUEFAST SIP TP SCREWS HI-LOW TREADED W/ CLIMACOAT 6" O.C. ALONG THE PERIMETER OF THE PANEL AND 12" O.C. WITHIN THE FIELD OF THE PANEL.
- AIR/MOISTURE BARRIER - BUILDING WRAP - REFER TO SPECIFICATION.
- CEMENT BOARD - BASIS OF DESIGN: DUROCK 5/8 IN. THICK, 4 FT WIDE ATTACHED TO METAL STUDS WITH TYPE S STEEL SCREWS SPACED 8 IN. O.C. ALONG EDGES OF BOARD AND 12 IN. O.C. IN THE FIELD OF THE BOARD.
- BOND COAT FOR SETTING TILE - LATEX MODIFIED PORTLAND CEMENT MORTAR APPLIED WITH A NOTCHED TROWEL.
- 12" X 24" DAL TILE MAGMA COLORBODY PORCELAIN TILE - ELEMENT MGS1 GROOVED (LIGHT POLISHED).
- GYPSUM BOARD - (1) LAYER 5/8" GYP. BD., PAPER SURFACED, APPLIED PERPENDICULAR TO FRAMING WITH 1" TYPE S STEEL SCREWS SPACED 8" O.C. SEE NOTES FOR GYP. BD. TYPE.
- BED OF SEALANT - MTL TRACKS IN CONTACT WITH CONCRETE TO BE SET IN A FULL BED OF SEALANT. SEAL OTHER TRACKS TO DECK.

SEE EXT. DETAILS FOR THRU FLASHING, ACCESSORIES, AND DETAILS

2 | -WALL TYPE 2 - EXTERIOR WALL - TILED

1 1/2" = 1'-0"

XX



W1

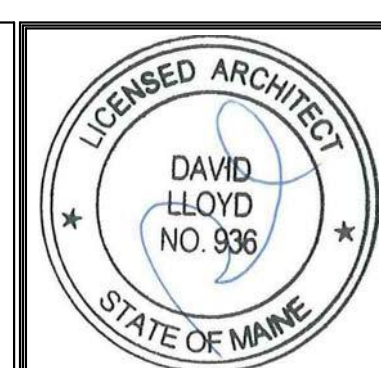
NON BEARING, NON RATED EXTERIOR WALL
STC SOUND - N/A

- CONT. METAL FLOOR AND CEILING RUNNER - CHANNEL SHAPED 25 MSG STEEL WITH 1 1/4" LONG LEGS FASTENERS @ 2'-0" O.C. MAX. WITHIN 1" OF ENDS.
- STEEL STUDS - CHANNEL SHAPED 25 MSG 20 GA STEEL 6" STUDS SPACED MAX. 24" O.C. STUDS TO BE CUT 3/4" LESS THAN ASSEMBLY HEIGHT.
- BATT INSULATION - R21 FIBER GLASS BATT INSULATION PACKED TIGHT INTO WALL CAVITY.
- PREFABRICATED INSULATED SHEAR PANEL - BASIS OF DESIGN: HUNTER PANELS XGI PLY - 2" POLYISOCYANURATE ADHERED TO 5/8" THICK NON-FIRE-RATED CDX FIR PLYWOOD SHEATHING. MECHANICALLY FASTEN PANEL TO STUDS WITH 4" TRUEFAST SIP TP SCREWS HI-LOW TREADED W/ CLIMACOAT 6" O.C. ALONG THE PERIMETER OF THE PANEL AND 12" O.C. WITHIN THE FIELD OF THE PANEL.
- AIR/MOISTURE BARRIER - BUILDING WRAP - REFER TO SPECIFICATION.
- FIBER CEMENT PANEL SYSTEM - (FCPS) BY NICHHA w/ PROPRIETARY ATTACHEMENTS, SEE ELEVATIONS FOR PANEL LAYOUT.
- PVC BOARD - PAINTED TO MATCH FIBER CEMENT PANELS ABOVE (REFER TO ELEVATIONS) - COUNTERSUNK SCREWS AND PLUGS.
- GYPSUM BOARD - (1) LAYER 5/8" GYP. BD., PAPER SURFACED, APPLIED PERPENDICULAR TO FRAMING WITH 1" TYPE S STEEL SCREWS SPACED 8" O.C. SEE NOTES FOR GYP. BD. TYPE.
- BED OF SEALANT - MTL TRACKS IN CONTACT WITH CONCRETE TO BE SET IN A FULL BED OF SEALANT. SEAL OTHER TRACKS TO DECK.

SEE EXT. DETAILS FOR THRU FLASHING, ACCESSORIES, AND DETAILS

1 | -WALL TYPE 1 - TYP EXTERIOR WALL FIRST FL

1 1/2" = 1'-0"



118 on Munjoy Hill, LLC
118 CONGRESS STREET
PORTLAND, ME 04101

Prepared For:

Consultant:

Architect:

118 ON MUNJOY HILL
48 Union Wharf Portland, Maine 04101
(207) 772-6022 Fax (207) 772-4056

Project:

Revisions:

3 | 05-13

POST-BID ADDENDUM

1 1/2" = 1'-0"

Scale:

Date:

15 MAY 2014

WALL TYPES

A4.01